

Agentic AI Flow using Opal

(describe, create, and share your AI mini-apps)

Opal is a new experimental tool from Google Labs that lets you build and share powerful AI mini apps that chain together prompts, models, and tools — all using simple natural language and visual editing.



Sachin Singla

Software Engineer 3 @ Google Cloud BI

<https://www.linkedin.com/in/sachin-singla/>

What is an Agent?



Personalized Upskilling Recommendations



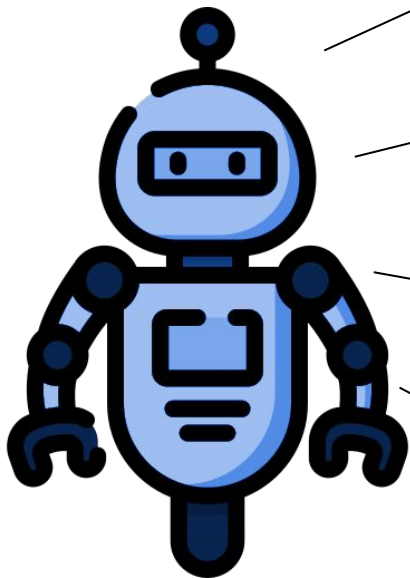
What exactly is an Agent?

Agents are LLMs that can not only understand language but also take actions to get things done. For example, they can find information, calculate results, or organize data in a database, making them much more helpful and proactive.

"Foundational models are like **backseat drivers**, constantly telling you what to do, while Agents are the **ones in the driving seat** actually getting things done. It's the difference between talk and action, and we all know which one speaks louder."



Anatomy of an Agent



Profiling/Planning module - *The DNA of a Specialized Agent*

That defines the scope of capabilities like Product Manager, UX Researcher, Full Stack developer (Foundational LLM)

Memory module - *The Agent's Long-Term Advantage*

Contains a short term memory component that is shared with other agents during the execution of a task. Also contains a long term memory component that contains feedback around the past tasks executed by the agent

Knowledge module - *The Agent's Brainpower*

Connects to all the knowledge sources that are needed for performing the tasks (PDFs, Docs, Databases)

Actions module - *The Agent's Superpowers*

Connects to external tools/APIs for performing an action and retrieving the result

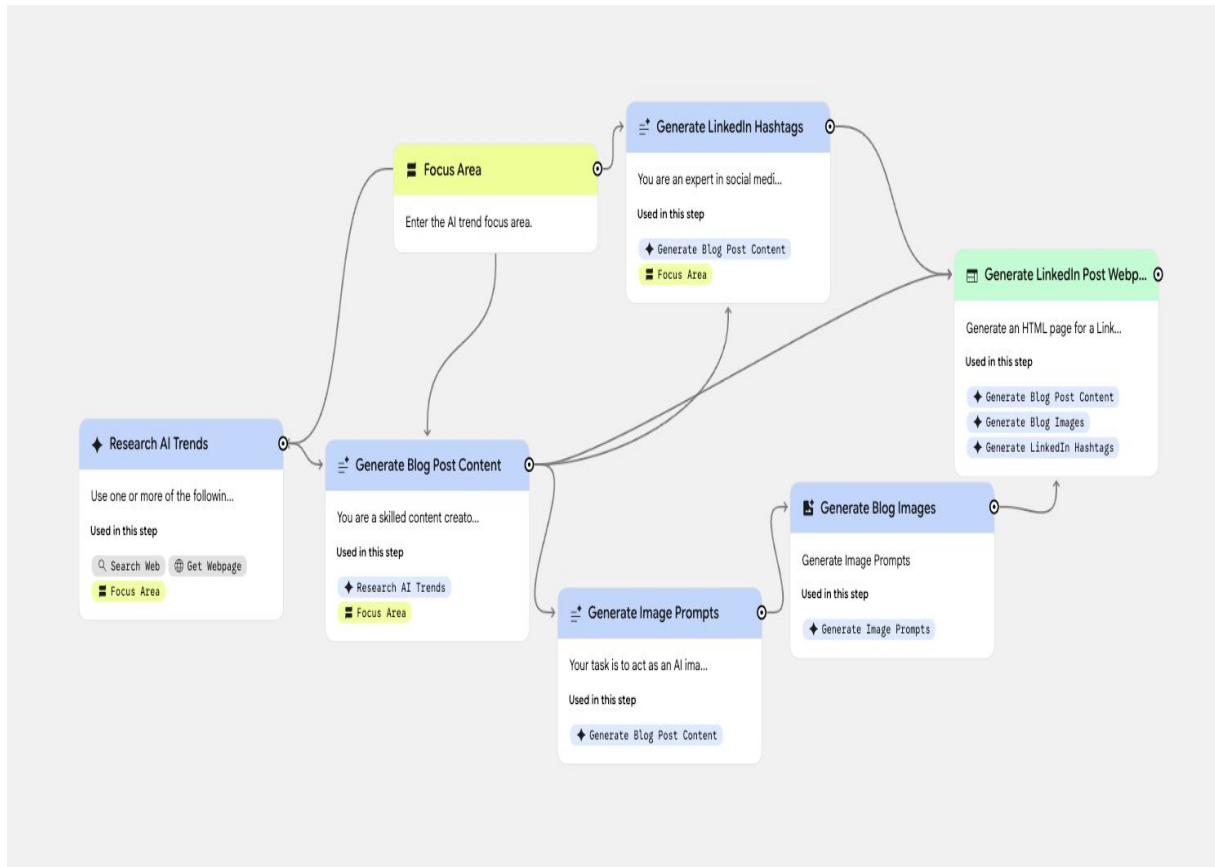
Opal (AI Flow) - AI Building AI Mini-Apps For You using Agents!

What it is ?

A feature within the AI Flow platform where you can describe a mini-application in natural language, and AI will **generate** the app for you using agents. These "Opals" are AI-powered applications that can themselves chain together multiple AI steps.

When to Use It

- You have an idea for a simple, AI-driven tool or workflow but don't have the time or resources to code it.
- To quickly prototype and share functional AI "mini-apps" for tasks like content generation, summarization, or simple analysis.
- When you want to experience AI building applications for you.



Opal features

- Primary Focus: Opal excels in AI-powered mini-apps via natural language
- Workflow Creation: Opal uses natural language and visual editing
- Ease of Use: Opal is beginner-friendly
- Flexibility & Control: Opal is more guided
- AI Integration: Opal is natively AI-driven
- Integration with the Google tech!





<https://bit.ly/devfest-opal>

“Civilization advances by extending the number of operations we can perform without thinking about them”

- **Alfred North Whitehead**
Mathematician and Philosopher



Happy Building!